

SECOND SUPPLEMENT TO THE GIBRALTAR GAZETTE

No. 4800 GIBRALTAR Thursday 24th December 2020

LEGAL NOTICE NO. 540 OF 2020.

TRAFFIC ACT 2005

EUROPEAN UNION (WITHDRAWAL) ACT 2019

DRIVING LICENCES AND REGISTRATION MARKS (AMENDMENT) (EU EXIT) REGULATIONS 2020

In exercise of the powers conferred upon the Government under section 15(2) and 61(e) of the Traffic Act 2005 and by section 11(1) of, and paragraph 1(a)(i) and (b) of Schedule 3 to, the European Union (Withdrawal) Act 2019, the Government and the Minister have made the following Regulations-

Title.

1. These Regulations may be cited as the Driving Licences and Registration Marks (Amendment) (EU Exit) Regulations 2020.

Commencement.

2.(1) Subject to subregulation (2), these Regulations come into operation on 1st January 2021.

(2) The following regulations come into operation upon publication-

- (a) regulations 3(2)(a), 3(3)(a), (b) and (d) and 3(9)(b);
- (b) regulation 4(4)(a), 4(5)(c) and 4(6); and
- (c) regulation 5(2)(a), (b) and the first definition in (e), 5(3), 5(10), 5(11), 5(12), 5(15)(a)(i) and (b)(i), 5(16), 5(20), 5(21), 5(28)(b) and (c), 5(29)(d)(iii)(B), 5(30) and 5(34)(b).

Amendments to the Traffic Act 2005.

3.(1) The Traffic Act 2005 is amended in accordance with this regulation.

(2) In section 2-

- (a) after the definition of “company” insert-

““Convention driving permit” has the meaning attributed to it in the Traffic (Licensing and Registration) Regulations;”;

(b) for the definition of “EEA state”, substitute-

““EEA state” has the meaning given to it in the Interpretation and General Clauses Act;”;

(c) in the definition of “European Union” for “European Communities Act” substitute “Interpretation and General Clauses Act”; and

(d) after the definition of “public service vehicle” insert-

““relevant state” means the United Kingdom, a member State of the European Union, an EEA State;”.

(3) In section 14-

(a) in subsection (5)(b), for “Directive 2007/46/EC of the European Parliament and the Council” substitute “Directive 2007/46/EC of the European Parliament and of the Council of 5 September 2007 establishing a framework for the approval of motor vehicles and their trailers, and of systems, components and separate technical units intended for such vehicles”;

(b) in subsection (5)(c), for “Directive 2014/45/EU of the European Parliament and the Council” substitute “Directive 2014/45/EU of the European Parliament and of the Council of 3 April 2014 on periodic roadworthiness tests for motor vehicles and their trailers”;

(c) in subsection (6), for “Member State” substitute “relevant state”; and

(d) for subsection (7), substitute-

“(7) The processing of personal data in the context of this section must be carried out in accordance with:

(a) Regulation (EU) 2016/679 of the European Parliament and of the Council of 27 April 2016 on the protection of natural persons with regard to the processing of personal data and on the free movement of such data;

(b) Directive (EU) 2016/680 of the European Parliament and of the Council of 27 April 2016 on the protection of natural persons with regard to the processing of personal data by competent authorities for the purposes of the prevention, investigation, detection or prosecution of criminal offences or the execution of criminal penalties, and on the free movement of such data; and

(c) Directive 2002/58/EC concerning the processing of personal data and the protection of privacy in the electronic communications sector.”.

(4) In section 29-

- (a) in subsection (1A), for “other EEA States” substitute “relevant states”; and
- (b) in subsection (2), for “an EEA State” substitute “a relevant state”.

(5) In section 31-

- (a) in subsection (1), under the “Category B” heading, paragraph (ii) -
 - (i) for “EEA States” substitute “relevant states and Gibraltar”;
 - (ii) for “Community Code” substitute “Code”; and
- (b) in subsection (2), for “Subject to the agreement of the European Commission, the” substitute “The”.

(6) In section 31B(3), for “Subject to prior consultation with the European Commission, the” substitute “The”.

(7) In section 32-

- (a) in subsection (2), for “Directive” substitute “Traffic (Licencing and Registration) Regulations”; and
- (b) delete subsection (3).

(8) In section 37(1)(a), for “Annex III” substitute “Schedule 4A of the Traffic (Licensing and Registration) Regulations”.

(9) For section 42 substitute-

“42. For the purposes of sections 39, 40 and 41 the expression “driving licence” shall include a licence issued under this Act, a Services driving licence, a licence issued by a relevant State and a Convention driving permit.”.

(10) In section 43(1), after “EEA” insert “or United Kingdom”.

(11) In section 59-

- (a) for the section heading substitute “**Recognition and exchange of a driving licence issued by a relevant state.**”;
- (b) for all instances of “an EEA State” substitute “a relevant state”;
- (c) for all other instances of “EEA State” substitute “relevant state”;
- (d) in subsection (6), for “an person” substitute “a person”; and

(e) in subsection (8), for “EEA States” substitute “EEA states”.

(12) For the section heading to section 59A substitute “**Recognition of a driving licence issued by a relevant state: minimum ages.**”.

(13) In section 60(3), for the two instances of “Community model driving licence” substitute “European Union Model Driving Licence”.

(14) In section 60A, for “European Commission” substitute “Chief Examiner of the Driver and Vehicle Licensing Department”.

(15) For section 60C, substitute-

“Mutual assistance.

60C. The licensing authority may assist the authorities in relevant states and may exchange information on the licences it has issued, exchanged, replaced, renewed or revoked.”.

(16) In section 60D(1), for “conformity with the Community” substitute “in conformity with the”.

(17) For section 61(e), substitute-

“(e) for the purpose of implementing in Gibraltar international agreements and conventions concerned with road transport;”.

Amendments to the Traffic (Drivers’ Qualification and Training) Regulations 2008.

4.(1) The Traffic (Drivers’ Qualification and Training) Regulations 2008 are amended in accordance with this regulation.

(2) In regulation 2(1)-

(a) for the definition of “Community code” substitute-

““Code” shall be construed in accordance with regulation 80 of the Traffic (Licensing and Registration) Regulations;”;

(b) for the “.” in the definition of “drivers” substitute “;”; and

(c) after the definition of “drivers” insert-

““EEA state” has the meaning attributed to it in the Interpretation and General Clauses Act; and

“relevant state” means the United Kingdom, a member State of the European Union and an EEA State.”.

(3) For regulation 3(1) substitute-

“3(1). These Regulations apply to drivers being-

- (i) nationals of a relevant state or Gibraltarians;
- (ii) nationals of third countries who are employed or used by an undertaking established in Gibraltar or in a relevant state,

engaged in road transport within a relevant state, on roads open to the public using-”

(4) In regulation 10(1) in paragraphs (b) and (c), substitute both instances of “Member State” for “relevant state”.

(5) In regulation 11-

- (a) for all instances of “Community Code” substitute “Code”;
- (b) in subregulation (2), for “Member States” substitute “relevant states”;
- (c) in subregulation (4), after “Regulation (EC) No 1072/2009” insert “of the European Parliament and of the Council of 21 October 2009 on common rules for access to the international road haulage market”; and

(6) In Schedule 1-

- (a) in paragraph 2.1. of section 1, for “Regulations (EEC) No 561/2006 and (EU) No 165/2014” substitute “Regulation (EC) No 561/2006 on the harmonisation of certain social legislation relating to road transport, and Regulation (EU) No 165/2014 on tachographs in road transport”;
- (b) in section 2.1 of section 2, after “Directive 2006/126/EC” insert “of the European Parliament and of the Council on driving licences”.

(7) For Schedule 2 substitute-

“SCHEDULE 2

(regulations 11 and 12)

PART A

**ARRANGEMENTS FOR THE EUROPEAN UNION MODEL FOR A DRIVER
QUALIFICATION CARD
(INCLUDING THE UNITED KINGDOM AND GIBRALTAR UNTIL IP
COMPLETION DAY)**

1. The physical characteristics of the card must comply with ISO standards 7810 and 7816-1.

The methods for verifying the physical characteristics of the card to ensure that they are consistent with international standards must comply with ISO standard 10373.

2. The card has two sides—

Side 1 contains:

- (a) the heading “driver qualification card” printed in large type in the official language or languages of the relevant state issuing the card;
- (b) the name of the relevant state issuing the card (optional) and, in the case of Gibraltar, the word “Gibraltar” appearing immediately below it in the same size, print and font;
- (c) the distinguishing sign of the relevant state issuing the card, printed in negative in a blue rectangle and encircled by 12 yellow stars; the distinguishing signs are as follows—

B	:	Belgium
BG	:	Bulgaria
CZ	:	The Czech Republic
DK	:	Denmark
D	:	Germany
EST	:	Estonia
GR	:	Greece
E	:	Spain
F	:	France
HR	:	Croatia
IRL	:	Ireland
I	:	Italy
CY	:	Cyprus
LV	:	Latvia
LT	:	Lithuania
L	:	Luxembourg
H	:	Hungary
M	:	Malta
NL	:	The Netherlands
A	:	Austria
PL	:	Poland
P	:	Portugal
RO	:	Romania
SLO	:	Slovenia
SK	:	Slovakia
FIN	:	Finland

S : Sweden
UK : The United Kingdom (also being the distinguishing sign for the purposes of cards issued by Gibraltar given that the United Kingdom is the Member State responsible for Gibraltar's external affairs);

(d) information specific to the card, numbered as follows—

1. surname of the holder;
2. first name of the holder;
3. date and place of birth of the holder;
4. (a) date of issue;
(b) date of expiry;
(c) the name of the issuing authority (may be printed on side 2), being, in the case of Gibraltar, the Government of Gibraltar;
(d) a different number from the driving licence number for administrative purposes (optional);
5. (a) driving licence number;
(b) serial number;
6. photograph of the holder;
7. signature of the holder;
8. normal place of residence, or postal address of the holder (optional);
9. the (sub)categories of vehicles for which the driver satisfies the initial qualification and periodic training requirements;

(e) the title “European Union model” in the language or languages of the relevant state issuing the card (and for the purposes of this section, Gibraltar is included in the definition of relevant state) and the heading “driver qualification card” in the other official languages of the EEA, printed in blue so as to form the background to the card:

tarjeta de cualificación del conductor
карта за квалификация на водача
Osvědčení profesní způsobilosti řidiče
chaufføruddannelsesbevis

Fahrerqualifizierungsnachweis
juhi ametipädevuse kaart
δελτίο επιμόρφωσης οδηγού
driver qualification card
carte de qualification de conducteur
kvalifikacijska kartica vozača
cárta cáilíochta tiomána
carta di qualificazione del conducente
vadītāja kvalifikācijas apliecība
vairuotojo kvalifikacinė kortelė
gépjárművezetői képesítési igazolvány
karta ta' kwalifikazzjoni tas-sewwieq
kwalificatiekaart bestuurder
karta kwalifikacji kierowcy
carta de qualificação do motorista
Cartela de pregătire profesională a conducătorului auto
preukaz o kvalifikácii vodiča
kartica o usposobljenosti voznika
kuljettajan ammattipätevyyskortti
yrkeskompetensbevis för förare;

(f) the reference colours—

- blue : Pantone Reflex blue,
- yellow : Pantone yellow;

Side 2 contains:

- (a) 9. the categories of vehicles for which the driver satisfies the initial qualification and periodic training requirements;
10. the harmonised Union Code “95” provided for in Annex 1 to Directive 2006/126/EC;
11. a space reserved for the possible entry of essential administrative details or details relating to road safety (optional). If the details relate to a heading set out in this Schedule, such details must be preceded by the corresponding heading number;
- (b) an explanation of the numbered entries appearing on sides 1 and 2 of the card (at least headings 1, 2, 3, 4(a), 4(b), 4(c), 5(a), 5(b) and 10).
- (c) in the case of Gibraltar, the words “the United Kingdom is the Member State responsible for Gibraltar’s external affairs”.

3. Security, including data protection.

The aim of the various constituent parts of the card is to rule out any forgery or tampering and to detect any attempts to do so.

The competent authority must ensure that the level of security of the card is at least comparable to the level of security of the driving licence.

4. Particular arrangements.

The competent authority may add colours or markings, such as a bar code, national symbols and security features, without prejudice to the other provisions of this Schedule.

In connection with the mutual recognition of cards, the bar code may not contain any information other than that already legibly appearing on the driver qualification card or which is essential for the card-issuing process.

5. Transitional Provisions

Driver qualification cards issued before 23 May 2020 shall be valid until their date of expiry.

PART B

ARRANGEMENTS FOR THE MODEL FOR A DRIVER QUALIFICATION CARD FOR THE UNITED KINGDOM AND GIBRALTAR AFTER IP COMPLETION DAY

(regulations 11 and 12)

1. The physical characteristics of the card must comply with ISO standards 7810 and 7816-1.

The methods for verifying the physical characteristics of the card to ensure that they are consistent with international standards must comply with ISO standard 10373.

2. The card has two sides—

Side 1 contains:

- (a) the heading “driver qualification card” printed in large type in English;
- (b) “UK” and, in the case of Gibraltar, the word “Gibraltar” appearing immediately below it in the same size, print and font;
- (c) the distinguishing sign of the United Kingdom or Gibraltar; the distinguishing signs are as follows—

UK : The United Kingdom

GBZ : Gibraltar

(d) information specific to the card, numbered as follows–

1. surname of the holder;
2. first name of the holder;
3. date and place of birth of the holder;
4. (a) date of issue;
(b) date of expiry;
(c) the name of the issuing authority (may be printed on side 2), being, in the case of Gibraltar, the Government of Gibraltar;
(d) a different number from the driving licence number for administrative purposes (optional);
5. (a) driving licence number;
(b) serial number;
6. photograph of the holder;
7. signature of the holder;
8. normal place of residence, or postal address of the holder (optional);
9. the (sub)categories of vehicles for which the driver satisfies the initial qualification and periodic training requirements;

Side 2 contains:

- (a) 9. the (sub)categories of vehicles for which the driver satisfies the initial qualification and periodic training requirements;
 10. the Code provided for in regulation 11;
 11. a space reserved for the possible entry of essential administrative details or details relating to road safety (optional). If the details relate to a heading set out in this Schedule, such details must be preceded by the corresponding heading number;
- (b) an explanation of the numbered entries appearing on sides 1 and 2 of the card (at least headings 1, 2, 3, 4(a), 4(b), 4(c), 5(a), 5(b) and 10).

3. Security, including data protection.

The aim of the various constituent parts of the card is to rule out any forgery or tampering and to detect any attempts to do so.

The competent authority must ensure that the level of security of the card is at least comparable to the level of security of the driving licence.

4. Particular arrangements.

The competent authority may add colours or markings, such as a bar code, national symbols and security features, without prejudice to the other provisions of this Schedule.

In connection with the mutual recognition of cards, the bar code may not contain any information other than that already legibly appearing on the driver qualification card or which is essential for the card-issuing process.”.

Amendments to the Traffic (Licensing and Registration) Regulations.

5.(1) The Traffic (Licensing and Registration) Regulations are amended in accordance with this regulation.

(2) In regulation 2-

(a) substitute the definition of “Contracting Country” for-

““Contracting Country” means a State which is party to-

- (a) the Convention of 1926;
- (b) either of the Conventions of 1956;
- (c) the Convention of 1949; or
- (d) the Convention of 1968,

and any territory for the international relations of which such a State is responsible to which the provisions of any of the said Conventions are applicable;”;

- (b) in the definition of “Convention driving permit” for “Form” substitute “the form”;
- (c) the definition of “Directive” is deleted;
- (d) after the definition of “driving test” insert-

““EEA state” has the meaning attributed to it in the Interpretation and General Clauses Act;”; and

(e) after the definition of “pedestrian controlled vehicle” insert-

““Regulation (EU) No 165/2014” means Regulation (EU) No 165/2014 of the European Parliament and of the Council of 4 February 2014 on tachographs in road transport, repealing Council Regulation (EEC) No 3821/85 on recording equipment in road transport and amending Regulation (EC) No 561/2006 of the European Parliament and of the Council on the harmonisation of certain social legislation relating to road transport;

“relevant legislation” means these Regulations and sections 27, 29, 31, 31A, 31B, 32, 32A, 37, 59, 59A, 60, 60A, 60B, 60C, 60D and 61A of the Traffic Act 2005;

“relevant state” means the United Kingdom, a member State of the European Union, or an EEA State;”.

(3) In regulation 11A(5)-

- (a) after “authorised treatment facility””, delete the comma and insert “and”; and
- (b) delete “, “EEA State” and “regulated vehicle””.

(4) In regulation 16A-

- (a) in the regulation heading, after “2001” insert “, until IP completion day”;
- (b) in the regulation, after “2001” insert “until IP completion day”;
- (c) for “change” substitute “voluntarily changed”; and
- (d) for “in accordance with regulation 16B” substitute “to accord with Schedule 3A”.

(5) After regulation 16A insert-

“Exhibition of registration marks for motor vehicles registered after IP completion day.

16AZ. In respect of vehicles registered after IP completion day or which voluntarily change the licence plate to accord with Schedule 3B, the registration mark assigned to a vehicle shall be exhibited on a flat rectangular plate or on a flat unbroken rectangular surface forming part of the vehicle. In each case the registration mark shall be constructed of reflex reflecting material made to British Standard BS AU 145d and in compliance with the provisions of Schedule 3B.”.

(6) In regulation 16AA-

- (a) in subregulation (1), for “16 and 16A” substitute “16, 16A and 16AZ”;
- (b) in subregulation (2), after “2001” insert “until IP completion day”;
- (c) after subregulation (2), insert-

“(2A) Regulation 16AZ should apply to a classic motor vehicle which was first registered, whether in Gibraltar or elsewhere after IP completion day.”;

- (d) in subregulation (3)(a), for “16A” substitute “16AZ”.

(7) In regulation 16AB, for “Article 2” substitute “Article 36 and Annex 2”.

(8) For regulation 16B substitute-

“Voluntary change of style of licence plate.

16B. In respect of vehicles registered-

- (a) on or before 6 September 2001; or
- (b) on or after 6 September 2001 until IP completion day,

the owner of the vehicle may choose to change the licence plate so that it conforms with the style of plate shown in Schedule 3B, but retains the existing number.”.

(9) In regulation 16C-

- (a) in subregulation (1), after “regulation” insert “to supply a plate on which is to be inscribed a vehicle registration mark in accordance with regulations 16, 16A or 16AZ”;
- (b) in subregulation (4), for “and 16A” substitute “, 16A or 16AZ”.

(10) In regulation 17-

- (a) delete “For vehicles registered on or before 6 September 2001”; and
- (b) for the first “in” substitute “In”.

(11) Delete regulation 17A.

(12) For regulation 17B substitute-

“(1) In order to be entitled to the benefits of the Convention of 1968, a motor vehicle registered under the Act shall, in addition to the registration mark, display at the

back, inscribed on a plate or on the vehicle itself, the distinguishing sign for Gibraltar, which sign shall conform as to composition and the manner in which is displayed with the provisions set out in Annexes 2 and 3 to the Convention of 1968 and bear the distinguishing letters “GBZ”.

(13) In regulation 20-

- (a) in subregulation (3), after “on or before 6 September” insert “2001”;
- (b) in subregulation (4), after “2001” insert “until IP completion day”; and
- (c) after subregulation (4) insert-

“(5) If a vehicle to which subregulation (3) applies is subsequently registered after IP completion day in the name of a new owner, the registration mark assigned to the vehicle shall conform to the form set out in diagrams 1 or 2 in Schedule 3B.”.

(14) In regulation 21-

- (a) in subregulation (3A), after “2001” insert “until IP completion day”;
- (b) after subregulation (3A) insert-

“(3B) If a vehicle to which subregulation (3) applies is subsequently registered after IP completion day in the name of a new owner, the registration mark assigned to the vehicle shall conform to the form set out in diagrams 1 or 2 in Schedule 3B.”;

- (c) in subregulation (5)(a) delete the “and” after the semicolon;
- (d) in subregulation (5)(b), at the end of the sentence place a semicolon;
- (e) in subregulation (5)(c), after “2001” insert “until IP completion day” and for the full stop substitute “; and”;
- (f) after subregulation (5)(c) insert-

“(d) in the case specified in paragraph (d) of that sub-regulation, the registration mark assigned to the vehicle registered after IP completion day shall conform to the form set out in diagrams 1 or 2 in Schedule 3B.”.

(15) In regulation 21A(2)-

- (a) in paragraph (b)-
 - (i) after “September” insert “2001”; and

- (ii) after the semicolon delete “and”;
 - (b) in paragraph (bb)-
 - (i) after “September” insert “2001”;
 - (ii) after “September 2001” insert “and until IP completion day”;
 - (iii) for the full stop substitute “; and”; and
 - (c) after paragraph (bb), insert-
 - “(bc) the registration mark assigned to the vehicle registered after IP completion day shall commence with the letter “G” and shall also display the month and year in which the licence expires in accordance with the provisions of Schedule 3B.”.
- (16) In regulation 22B-
- (a) in subregulation (1), after “Act” insert “2005”; and
 - (b) in subregulation (2), for “Transport Combined Operations Regulations 2003” substitute “Transport (Combined Operations) Regulations 2003”.
- (17) For the heading of regulation 79A substitute “**Exchange of relevant state driving licences.**”
- (18) In regulation 80-
- (a) in subregulation (1), delete “of Annex I of the Directive”; and
 - (b) in subregulation (2), for “European Commission” substitute “the Minister”.
- (19) In regulation 80A-
- (a) in subregulation (1), delete “if the European Commission has laid down the requirements referred to in Article 1(2) of the Directive”;
 - (b) in subregulation (2), for “Annex I to the Directive” substitute “Schedule 4C”; and
 - (c) for subregulation (3) substitute-
 - “(3) Additional data may be stored if that additional data does not in any way interfere with the requirements of these Regulations.”.
- (20) In regulation 86(1)(b), after “Convention of 1949” insert “or the Convention of 1968”.
- (21) In regulation 95-

- (a) in subregulation (1), for “each or either of the Forms” substitute “the forms”;
- (b) in subregulation (2), for “Form” substitute “form”;
- (c) for subregulation (3) substitute-

“(3) Subject to subregulation (3A), a document issued under this regulation shall be valid for a period of one year from the date of issue but the licensing authority may, by endorsement thereon, renew or reissue any such document the validity of which has expired by the effluxion of time.

(3A) An international driving permit issued under this regulation in the form D described in Schedule 6 shall be valid for a period of three years from the date of issue or until the date of expiry of the domestic driving permit, whichever is the earlier.”.

(22) In regulation 103-

- (a) in subregulation (1), delete-
 - (i) “Annex IV to the Directive (which is reproduced for information purposes”;
 - (ii) “)”; and
- (b) in subregulation (2), delete “Annex IV to the Directive”.

(23) In Schedule 1-

- (a) in the List of Forms, for “20. Application for Gibraltar driving licence in exchange for a driving licence licence issued by a member State of the European Community.” substitute-

“20. Application for Gibraltar driving licence in exchange for a driving licence issued by a relevant state.”; and
- (b) In Form 20, for “**APPLICATION FOR GIBRALTAR DRIVING LICENCE IN EXCHANGE FOR A DRIVING LICENCE ISSUED BY A MEMBER STATE OF THE EUROPEAN COMMUNITY.**” substitute-

“APPLICATION FOR GIBRALTAR DRIVING LICENCE IN EXCHANGE FOR A DRIVING LICENCE ISSUED BY A RELEVANT STATE.”.

(24) In Schedule 3A-

- (a) before “PART 1” insert “VEHICLES FIRST REGISTERED ON OR AFTER 6 SEPTEMBER 2001 AND UNTIL IP COMPLETION DAY”;
- (b) after “PART 2 MANDATORY CHARACTER FONTS” insert-

“

I 2 3 4 5 6 7 8 9
A B C D E F G H
J K L M N O P Q
R S T U V W X Y Z”

(25) After Schedule 3A, insert the following Schedule-

“SCHEDULE 3B

VEHICLES FIRST REGISTERED ON OR AFTER IP COMPLETION DAY

PART 1

ILLUSTRATED REQUIREMENTS AS TO REGISTRATION MARKS

The registration mark shall consist of letters and numbers enclosed by a black border. On the left-hand side there shall be distinguishing mark for Gibraltar and on the extreme right the reference “BS AU 145d”. The letters and numbers will continue, from the last issuance under Schedule 3A, in the format of G1000A, and continue to be issued in numerical order (for example, until G9999A, when the ‘A’ becomes ‘B’, and so on).

The lettering shall be black on a white plate at the front and yellow plate at the rear. The background surface should be reflex-reflecting but the characters must not. All number plates must be constructed using the mandatory character font set out below. Numbers and letters shall be equally spaced between the black border. No number plate fixing bolt shall alter the appearance of the letters or numbers.

Distinguishing Sign for Gibraltar

Colour

Retro reflecting Pantone Blue code 2935C

Distinguishing Letters in Capitals

GBZ

Dimensions

Length	111mm
Width	45mm

Character	Size	Colour
Height	20mm	white
Width	11mm	white
Stroke	4mm	white
Space between letters	3mm	blue

In the case of Export Vehicles Expiry Date

Colour

Retro reflecting Green

Character	Size	Colour
Height	20mm	White
Width	14mm	
Stroke	4mm	
Space between top and bottom figures	35mm	
Space between figures	5mm	
Dividing Line	1mm	

DIAGRAM 1



Dimensions		Black Border	
Length	520mm	Width	1.5mm
Width	111mm		
Character	Size	Characters to BlackBorder	10mm
Height	79mm	Space between Numbers	11mm
Width	50mm		
Stroke	14mm	Space between Letters & Numbers	25mm
Side Margin	5mm		
Top & Bottom			
Margin	4.5mm		

DIAGRAM 2



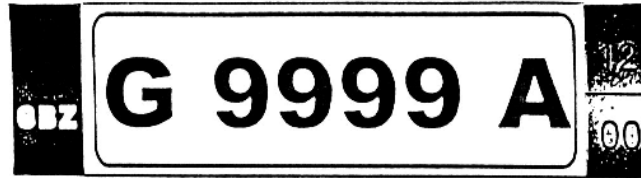
Dimensions		Black Border	
Length	325mm	Width	3mm
Width	200mm	Characters to Black Border	5mm
Character	Size	Space between Numbers	11mm
Height	79mm	Space between Letters & Numbers	25mm
Width	50mm		
Stroke	14mm		
Top & Bottom		Dimensions	
Margin	13mm	Length	90mm
		Width	45mm

**DIAGRAM 3
(REAR PLATE OF MOTORCYCLES ONLY)**



Dimensions		Black Border	
Length	228mm	Width	3mm
Width	165mm	Characters to Black Border	10mm
Character	Size	Space between Numbers	10mm
Height	45mm	Space between Letters & Numbers	20mm
Width	30mm		
Stroke	9mm		
Top & Bottom		Dimensions	
Margin	13mm	Length	75mm
		Width	45mm

DIAGRAM 4



Dimensions		Black Border	
Length	520mm	Width	1.5mm
Width	111mm		
Character	Size	Characters to Black Border	10mm
Height	79mm	Space between Numbers	11mm
Width	50mm	Space between Letters & Numbers	25mm
Stroke	14mm		
Side Margin	5mm		
Top & Bottom		Dimensions	
Margin	4.5mm	Length	111mm
		Width	45mm

DIAGRAM 5



Dimensions		Black Border	
Length	325mm	Width	3mm
Width	200mm	Characters to Black Border	5mm
Character	Size	Space between Numbers	11mm
Height	79mm	Space between Letters & Numbers	25mm
Width	50mm		
Stroke	14mm		
Top & Bottom		Dimensions	
Margin	13mm	Length	90mm
		Width	45mm

**DIAGRAM 6
(REAR PLATE OF MOTORCYCLES ONLY)**



Dimensions		Black Border	
Length	228mm	Width	3mm
Width	165mm	Characters to Black Border	10mm
Character	Size	Space between Numbers	10mm
Height	45mm	Space between Letters & Numbers	20mm
Width	30mm		
Stroke	9mm	Dimensions	
Top & Bottom		Length	75mm
Margin	13mm	Width	45mm

**DIAGRAM 7
(Dealer Licence Plates)**



Dimensions		Black Border	
Length	520mm	Width	1.5mm
Width	111mm	Characters to Black Border	10mm
Character	Size	Space between Numbers	11mm
Height	79mm	Space between Letters & Numbers	25mm
Width	50mm		
Stroke	14mm		
Side Margin	5mm		
Top & Bottom			
Margin	4.5mm		

Numbers and letters shall be equally spaced between the black border. No number plate fixing bolt shall alter the appearance of the letters or numbers.

PART 2

MANADATORY CHARACTER FONTS

I 2 3 4 5 6 7 8 9
A B C D E F G H
J K L M N O P Q
R S T U V W X Y Z”.

(26) In Schedule 4, delete paragraph 5.

(27) In Schedule 4A-

- (a) delete “(This Schedule reproduces Annex III to the Directive)”;
- (b) in paragraph 4, for “EEA State of normal residence whenever their driving licence is renewed” substitute “in the relevant state of normal residence whenever their driving licence is renewed, or in Gibraltar.”
- (c) in paragraph 5, for “EEA States” substitute “relevant states”.

(28) In Schedule 4B-

- (a) delete “(This Schedule reproduces Annex II to the Directive)”;
- (b) in paragraph 4.1.1.-
 - (i) delete “(8)”;
 - (ii) for “Regulation (EEC) No 3821/85 on recording equipment in road transport” substitute “Regulation (EU) No 165/2014”;
- (c) for all instances of “Regulation (EEC) No 3821/85” substitute “Regulation (EU) No 165/2014”;
- (d) delete the second paragraph of 6.2.5.;

- (e) in paragraph 7.3.2., for “EEA States” substitute “Chief Examiner of the Driver and Vehicle Licensing Department”;
- (f) in paragraph 8.2.2., for “EEA States” substitute “Chief Examiner of the Driver and Vehicle Licensing Department”; and
- (g) in the second paragraph of 9.1., for “a body authorised by the EEA State” substitute “Chief Examiner of the Driver and Vehicle Licensing Department”.

(29) In Schedule 4C-

- (a) in the title-
 - (i) before the word “Provisions” insert “**PART A**”;
 - (ii) after “licence” insert “**(including the United Kingdom and Gibraltar until IP completion day)**”;
 - (iii) delete “*(This Schedule reproduces Annex I of the Directive)*”;
- (b) after the title insert “regulation 80” on the right hand side of the page;
- (c) in paragraph 2(c), for “EEA States” substitute “EEA states”;
- (d) in paragraph 3-
 - (i) for all instances of “EEA State” substitute “EEA state”;
 - (ii) subparagraph 9(e), for “Community” substitute “EEA states”;
 - (iii) subparagraph (12)-
 - (A) for the first line of subparagraph (12) substitute-

“12. additional information /restriction(s), in code form, facing the category affected.”
 - (B) in Code 97, for “Regulation (EEC) No 3821/85” substitute “Regulation (EU) No 165/2014”;
- (e) in paragraph 4(a), for the 3 instances of “EEA State” substitute “EEA state”; and
- (f) after the illustrations of the European Union model driving licence insert-

“PART B
Provisions concerning the model driving licence
for the United Kingdom and Gibraltar after IP completion day

1. The physical characteristics of the card of the model driving licence shall be in accordance with ISO 7810 and ISO 7816-1.

The card shall be made of polycarbonate.

Methods for testing the characteristics of driving licences for the purpose of confirming their compliance with the international standards shall be in accordance with ISO 10373.

2. Physical security of driving licences.

The threats to the physical security of driving licences are:

- production of false cards: creating a new object which bears great resemblance to the document, either by making it from scratch or by copying an original document,
- material alteration: changing a property of an original document, e.g. modifying some of the data printed on the document;

The overall security lies in the system in its entirety, consisting of the application process, the transmission of data, the card body material, the printing technique, a minimum set of different security features and the personalisation process.

(a) The material used for driving licences shall be made secure against forgery by using the following techniques (mandatory security features):

- card bodies shall be UV dull,
- a security background pattern designed to be resistant to counterfeit by scanning, printing or copying, using rainbow printing with multicolour security inks and positive and negative guilloche printing. The pattern shall not be composed of the primary colours (CMYK), shall contain complex pattern designs in a minimum of two special colours and shall include micro lettering,
- optical variable elements providing adequate protection against copying and tampering of the photograph,
- laser engraving,
- in the area of the photograph the security design background and photograph should overlap on at least its border (weakening pattern).

- (b) In addition, the material used for driving licences shall be made secure against forgery by using at least three of the following techniques (additional security features):
- colour-shifting inks*,
 - thermochromic ink*,
 - custom holograms*,
 - variable laser images*,
 - ultraviolet fluorescent ink, visible and transparent,
 - iridescent printing,
 - digital watermark in the background,
 - infrared or phosphorescent pigments,
 - tactile characters, symbols or patterns*.
- (c) As a basis, the techniques indicated with an asterisk are to be preferred as they enable the law enforcement officers to check the validity of the card without any special means.

3. The licence shall have two sides.

Page 1 shall contain:

- (a) the words “Driving Licence” printed in large type and followed by the words “*Permis de conduire*” ;
- (b) “UK” or “UNITED KINGDOM” and, in the case of Gibraltar, the word “Gibraltar” appearing immediately below it in the same size, print and font;
- (ba) the United Kingdom licence shall bear the flag of the United Kingdom;
- (c) the distinguishing sign of the United Kingdom or Gibraltar; the distinguishing signs are as follows–
- | | | |
|-----|---|--------------------|
| UK | : | The United Kingdom |
| GBZ | : | Gibraltar |
- (d) information specific to the licence issued, numbered as follows:

1. surname of the holder;
2. other name(s) of the holder;
3. date and place of birth of the holder;
- 4.(a) date of issue of the licence;
- (b) date of expiry of the licence or a dash if the licence is valid indefinitely;
- (c) the name of the issuing authority (may be printed on page 2);
- (d) a different number from the one under heading 5, for administrative purposes (optional);
5. number of the licence;
6. photograph of the holder;
7. signature of the holder;
8. permanent place of residence, or postal address (optional);
9. category of vehicle(s) the holder is entitled to drive (national categories shall be printed in a different type from harmonised categories);

Page 2 shall contain:

- (a) 9. category of vehicle(s) the holder is entitled to drive (national categories shall be printed in a different type from harmonised categories);
10. date of first issue of each category (this date must be repeated on the new licence in the event of subsequent replacement or exchange) each field of the date shall be written with two digits and in the following sequence: day.month.year (DD.MM.YY);
11. date of expiry of each category each field of the date shall be written with two digits and in the following sequence: day.month.year (DD.MM.YY);
12. additional information /restriction(s), in code form, facing the category affected.

The Codes shall be as follows:

codes 01 to 99: harmonised codes

DRIVER (medical reasons)

01. Sight correction and/or protection

01.01. Glasses

01.02. Contact lens(es)

01.05. Eye cover

01.06. Glasses or contact lenses

01.07. Specific optical aid

02. Hearing aid/communication aid

03. Prosthesis/orthosis for the limbs

03.01. Upper limb prosthesis/orthosis

03.02. Lower limb prosthesis/orthosis

VEHICLE ADAPTATIONS

10. Modified transmission

10.02. Automatic selection of gear ratio

10.04. Adapted transmission control device

15. Modified clutch

15.01. Adapted clutch pedal

15.02. Hand operated clutch

15.03. Automatic clutch

15.04. Measure to prevent obstruction or actuation of clutch pedal

20. Modified braking systems

20.01. Adapted brake pedal

20.03. Brake pedal suitable for use by left foot

20.04. Sliding brake pedal

20.05. Tilted brake pedal

20.06. Hand operated brake

- 20.07. Brake operation with maximum force of ... N (*) (for example: “20.07(300N)”)
- 20.09. Adapted parking brake
- 20.12. Measure to prevent obstruction or actuation of brake pedal
- 20.13. Knee operated brake
- 20.14. Brake system operation supported by external force
- 25. Modified accelerator system
 - 25.01. Adapted accelerator pedal
 - 25.03. Tilted accelerator pedal
 - 25.04. Hand operated accelerator
 - 25.05. Knee operated accelerator
 - 25.06. Accelerator operation supported by external force
 - 25.08. Accelerator pedal on the left
 - 25.09. Measure to prevent obstruction or actuation of accelerator pedal
- 31. Pedal adaptations and pedal safeguards
 - 31.01. Extra set of parallel pedals
 - 31.02. Pedals at (or almost at) the same level
 - 31.03. Measure to prevent obstruction or actuation of accelerator and brake pedals when pedals not operated by foot
 - 31.04. Raised floor
- 32. Combined service brake and accelerator systems
 - 32.01. Accelerator and service brake as combined system operated by one hand
 - 32.02. Accelerator and service brake as combined system operated by external force
- 33. Combined service brake, accelerator and steering systems
 - 33.01. Accelerator, service brake and steering as combined system operation by external force with one hand

- 33.02. Accelerator, service brake and steering as combined system operation by external force with two hands
- 35. Modified control layouts (lights switches, windscreen wiper/washer, horn, direction indicators, etc.)
 - 35.02. Control devices operable without releasing the steering device
 - 35.03. Control devices operable without releasing the steering device with the left hand
 - 35.04. Control devices operable without releasing the steering device with the right hand
 - 35.05. Control devices operable without releasing the steering device and the accelerator and braking mechanisms
- 40. Modified steering
 - 40.01. Steering with maximum operation force of ... N (*) (for example “40.01(140N)”)
 - 40.05. Adapted steering wheel (larger/thicker steering wheel section, reduced diameter, etc.)
 - 40.06. Adapted position of steering wheel
 - 40.09. Foot operated steering
 - 40.11. Assistive device at steering wheel
 - 40.14. One hand/arm operated alternative adapted steering system
 - 40.15. Two hand/arm operated alternative adapted steering system
- 42. Modified rear/side view devices
 - 42.01. Adapted device for rear view
 - 42.03. Additional inside device permitting side view
 - 42.05. Blind spot viewing device
- 43. Driver seating position
 - 43.01. Driver seat height for normal view and in normal distance from the steering wheel and the pedals
 - 43.02. Driver seat adapted to body shape

- 43.03. Driver seat with lateral support for good stability
- 43.04. Driver seat with armrest
- 43.06. Seat belt adaptation
- 43.07. Seat belt type with support for good stability
- 44. Modifications to motorcycles (sub-code use obligatory)
 - 44.01. Single operated brake
 - 44.02. Adapted front wheel brake
 - 44.03. Adapted rear wheel brake
 - 44.04. Adapted accelerator
 - 44.08. Seat height allowing the driver, in sitting position, to have two feet on the surface at the same time and balance the motorcycle during stopping and standing.
 - 44.09. Maximum operation force of front wheel brake ... N (*) (for example "44.09(140N)")
 - 44.10. Maximum operation force of rear wheel brake ... N (*) (for example "44.10(240N)")
 - 44.11. Adapted foot-rest
 - 44.12. Adapted hand grip
- 45. Motorcycle with side-car only
- 46. Tricycles only
- 47. Restricted to vehicles of more than two wheels not requiring balance by the driver for starting, stopping and standing
- 50. Restricted to a specific vehicle/chassis number (vehicle identification number, VIN)

Letters used in combination with codes 01 to 44 for further specification:

- a left
- b right
- c hand

d foot

e middle

f arm

g thumb

LIMITED USE CODES

61. Limited to day time journeys (for example: one hour after sunrise and one hour before sunset)

62. Limited to journeys within a radius of ... km from holder's place of residence or only inside city/region

63. Driving without passengers

64. Limited to journeys with a speed not greater than ... km/h

65. Driving authorised solely when accompanied by a holder of a driving licence of at least the equivalent category

66. Without trailer

67. No driving on motorways

68. No alcohol

69. Restricted to driving vehicles equipped with an alcohol interlock in accordance with EN 50436. Indication of an expiry date is optional (for example “69” or “69(01.01.2016)”)

ADMINISTRATIVE MATTERS

70. Exchange of licence No ... issued by ... (EU/UN distinguishing sign in the case of a third country; for example “70.0123456789.NL”)

71. Duplicate of licence No ... (EU/UN distinguishing sign in the case of a third country; for example “71.987654321.HR”)

73. Restricted to category B vehicles of the motor quadricycle type (B1)

78. Restricted to vehicles with automatic transmission

79. (...) Restricted to vehicles which comply with the specifications indicated in brackets, for the application of section 61A of the Traffic Act 2005

- 79.01. Restricted to two-wheel vehicles with or without side-car
- 79.02. Restricted to category AM vehicles of the three-wheel or light quadricycle type
- 79.03. Restricted to tricycles
- 79.04. Restricted to tricycles combined with a trailer having a maximum authorised mass not exceeding 750 kg
- 79.05. Category A1 motorcycle with a power/weight ratio above 0,1 kW/kg
- 79.06. Category BE vehicle where the maximum authorised mass of the trailer exceeds 3,500 kg

80. Restricted to holders of a driving licence for a category A vehicle of the motor tricycle type not having reached the age of 24 years

81. Restricted to holders of a driving licence for a category A vehicle of the two-wheel motorcycle type not having reached the age of 21 years

95. Driver holding CPC meeting the obligation of professional aptitude provided for by the Traffic (Drivers' Qualification and Training) Regulations 2008 until ... (for example "95(01.01.12)")

96. Category B vehicles combined with a trailer with a maximum authorised mass exceeding 750 kg where the maximum authorised mass of such combination exceeds 3,500 kg but does not exceed 4,250 kg

97. Not authorised to drive a category C1 vehicle which falls within the scope of Regulation (EU) No 165/2014

— codes 100 and above: national codes valid only for driving in the territory of the Member State which issued the licence.

Where a code applies to all categories for which the licence is issued, it may be printed under headings 9, 10 and 11;

(*) This force indicates the driver's capability for operating the system;

13. in implementation of section 4(a) of this Schedule, a space reserved for the possible entry of information essential for administering the licence;

14. a space reserved for the possible entry for the licence issuer for information essential for administering the licence or related to road safety (optional). If the information relates to one of the headings defined in this Schedule, it should be preceded by the number of the heading in question.

With the specific written agreement of the holder, information which is not related to the administration of the driving licence or road safety may also be added in this space; such addition shall not alter in any way the use of the model as a driving licence;

- (b) an explanation of the numbered items which appear on pages 1 and 2 of the licence (at least items 1, 2, 3, 4 (a), 4 (b), 4 (c), 5, 10, 11 and 12).
- (c) a space shall be reserved on the model driving licence to allow for the possible introduction of a microchip or similar computer device.

4. Special provisions

- (a) Where the holder of a driving licence issued in accordance with this Schedule has his normal place of residence in the United Kingdom or an EEA state, the United Kingdom or EEA state may enter in the licence such information as is essential for administering it, provided that it also enters this type of information in the licences which it issues and provided that there remains enough space for the purpose.
- (b) the addition of colours or markings, such as bar codes and national symbols, are permitted without prejudice to the other provisions of this Schedule.

In the context of mutual recognition of licences, the bar code may not contain information other than what can already be read on the driving licence or which is essential to the process of issuing the licence.

- (c) Information contained in the front and reverse side of the card shall be legible with the eye, using a minimum character height of 5 points for items 9 to 12 on the reverse side.

MODEL DRIVING LICENCE

Page 1 DRIVING LICENCE

UK	DRIVING LICENCE PERMIS DE CONDUIRE	UNITED KINGDOM GIBRALTAR
6 PHOTO <div style="border: 1px solid black; height: 80px; width: 100%;"></div>	1. 2. 3. 4a. 4c. 4b. (4d.) 5. 7. (8.)	
9.		

Page 2 1. Name 2. First name 3. Date and place of birth 4a. Date of issue of driving licence 4b. Official date of expiry 4c. Issued by 5. Serial number of licence 8. Place of residence 9. Category (1) 10. Date of issue, by category 11. Date of expiry, by category 12. Restrictions

13. <div style="border: 1px solid black; height: 20px; width: 100%;"></div> (14) <div style="border: 1px solid black; height: 20px; width: 100%;"></div>	<table border="1" style="width: 100%; border-collapse: collapse;"> <thead> <tr> <th style="width: 10%;"></th> <th style="width: 20%;">9.</th> <th style="width: 20%;">10.</th> <th style="width: 20%;">11.</th> <th style="width: 20%;">12.</th> </tr> </thead> <tbody> <tr><td>A1</td><td></td><td></td><td></td><td></td></tr> <tr><td>A</td><td></td><td></td><td></td><td></td></tr> <tr><td>B1</td><td></td><td></td><td></td><td></td></tr> <tr><td>B</td><td></td><td></td><td></td><td></td></tr> <tr><td>C1</td><td></td><td></td><td></td><td></td></tr> <tr><td>C</td><td></td><td></td><td></td><td></td></tr> <tr><td>D1</td><td></td><td></td><td></td><td></td></tr> <tr><td>D</td><td></td><td></td><td></td><td></td></tr> <tr><td>BE</td><td></td><td></td><td></td><td></td></tr> <tr><td>C1E</td><td></td><td></td><td></td><td></td></tr> <tr><td>CE</td><td></td><td></td><td></td><td></td></tr> <tr><td>D1F</td><td></td><td></td><td></td><td></td></tr> <tr><td>DE</td><td></td><td></td><td></td><td></td></tr> </tbody> </table>		9.	10.	11.	12.	A1					A					B1					B					C1					C					D1					D					BE					C1E					CE					D1F					DE				
	9.	10.	11.	12.																																																																			
A1																																																																							
A																																																																							
B1																																																																							
B																																																																							
C1																																																																							
C																																																																							
D1																																																																							
D																																																																							
BE																																																																							
C1E																																																																							
CE																																																																							
D1F																																																																							
DE																																																																							

1. Name 2. First name 3. Date and place of birth
 4a. Date of issue of driving licence 4b. Official date of expiry
 4c. Issued by 5. Serial number of licence
 8. Place of residence 9. Category (1)
 10. Date of issue, by category
 11. Date of expiry, by category
 12. Restrictions

”

(30) For Schedule 6 substitute-

“SCHEDULE 6.

Regulation 95(1)

DESCRIPTION OF INTERNATIONAL DRIVING PERMITS.

- A - The form for an international driving permit set out in Annex 10 of the Convention of 1949.
- B - The form for an international driving permit set out in Annex E of the Convention of 1926.
- C - The form of an international certificate for motor vehicles set out in Annex B of the Convention of 1926.
- D - The form of an international driving permit set out in Annex 7 of the Convention of 1968.”.

(31) In Schedule 7-

- (a) delete “PART 2 MANDATORY CHARACTER FONTS”; and
- (b) delete-

“

I 2 3 4 5 6 7 8 9
A B C D E F G H
J K L M N O P Q
R S T U V W X Y Z”.

(32) In Schedule 8 delete “(This Schedule reproduces Annex V to the Directive)”.

(33) In Schedule 9 delete “(This Schedule reproduces Annex VI to the Directive)”.

(34) In Schedule 10-

- (a) delete “(This Schedule reproduces Annex IV to the Directive)”;

- (b) in paragraph 2.1.(d), for “EEA States” substitute “Member States”; and
- (c) in paragraphs 2.3., 3., 4. and 5., for all instances of “EEA State” substitute “EEA state” and for all instances of “EEA States” substitute “EEA states”.

Dated: 24th December 2020.

V. DARYANANI,
Minister with responsibility for Traffic,
and for the Government.

EXPLANATORY MEMORANDUM

These Regulations relate to driving licences and registration marks and are made in exercise of the powers conferred by section 11(1) of, and paragraph 1(a)(i) and (b) of Schedule 3 to, the European Union (Withdrawal) Act 2018 in order to address failures of retained EU law to operate effectively and other deficiencies arising from the withdrawal from the European Union.

They are also made in exercise of sections 15(2) and 61 of the Traffic Act 2005 relating to the registration of motor vehicles and to update references to European legislation.